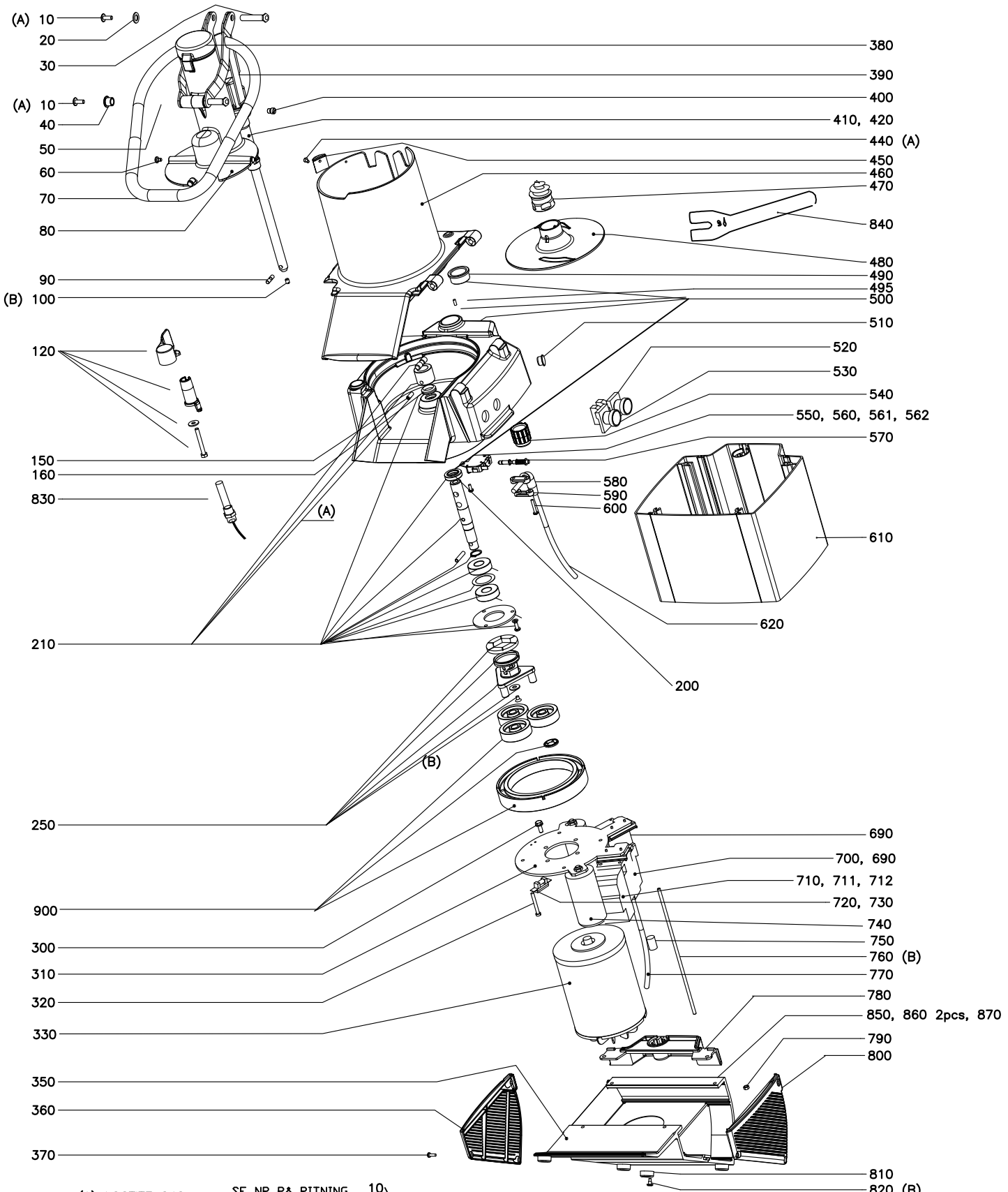


RG-250



(A) LOCTITE 242

(B) LOCTITE 243

SE NR PA RITNING

- 10
 - 20
 - 30
 - 40
 - 50
 - 60
 - 70
 - 80
 - 90
 - 100
 - 390
 - 400
 - 410
 - 420
- 920

RG-250

No. on drawing	Item No.	Description	Pcs
10	25190	Screw	2
20	10642	Washer, plasitc 18/10,5X1,5	2
30	25162	Shaft L=45	1
40	25181	Bushing 19/14-10,2	2
50	25189	Shaft L=56	1
60	33305	Slide knob dia. 10X4	3
70	25155	Pusher handle	1
80	25102	Feeder plate incl. shaft	1
90	25159	Pin, 6MM	1
100	14833	Lock screw	1
120	1406	Locking handle kompl.	1
150	3152	Carrier pin for ejector plate	2
160	10262	Seal ring V-18S	1
200	10259	Rubber seal washer 18X30X7	1
210	1402	Knife shaft kompl RG-200/ RG-250	1
250	1403	Brake kompl. RG-100/200/250.	1
300	14521	Screw M6S M6X12H	4
310	25149	Plate, motor	1
320	14353	Screw MRT M5X40	4
330	15760	MOTOR 220-230 1 60	1
330	15757	MOTOR 110-120 1 50/60	1
330	15759	MOTOR 230/400 3 50, 440 60	1
350	25140	Base	1
360	25146	Louver, left	1
370	14622	Screw RTK ST3.5X13 A2 70	6
380	25180	Pestle	1
390	25160	Link	1
400	25191	Screw for link system	2
410	25161	sleeve for link system	1
420	25182	Bushing 18-15,3	2
440	14223	Screw MKFS M4X 10 A2 70	1
450	25177	Support, piston	1
460	25106	Feed cylinder compl.	1
470	1172	Decorring device	1
480	25153	Ejector plate	1
490	25183	Bushing 37/33-26,4	1
495	14881	Rivet KDS 2X4,5	1
500	1404	Knife chamber RG-250	1
510	10455	Plug IKPT 1715S	1
520	15657	Push button o compl.	1
530	15440	Push button 1 complete	1
540	25158	Guide bushing	1
550	25145	Safety switch compl. US	1
560	14851	Screw MRT M4X10 A2	2
561	15565	Micro switch XGT42C-86-S20Z1	1
562	23227	Insulating barrier for switch	1
570	25163	Activator pin compl.	1
580	15648	Sleeve 134-002 dia. 12/8	1
590	10589	Strain relief clamp 55-016-89	2
600	14336	Screw MRT-H M4X25 A2 70	2
610	25137	Machine housing compl.	1
620	15147	Supply cord CB 1 phase RG-100/200/250/350/VCB-61/VCM-41	1
620	15142	Supply cord CB 3 phase	1
620	15377	Supply cord BS/2.5MS UK	1
620	15208	Supply cord SJT3X14 AWG, US	1
690	15810	Contactora 11BG0610A230	4

RG-250

No. on drawing	Item No.	Description	Pcs
690	15813	Contactora 11BG0910A110	1
690	15818	Contactora 11BG0610A400	2
700	15815	Contactora BF1210A110	1
710	15811	Overload rel.RF120160	1
710	15816	Overload RF120630	1
710	15666	Overload rel. 7-10A 110v	1
720	15385	Fuse holder	1
730	15384	Fuse T100MA	1
740	15489	Capasitor 16 MF, 220-240V	1
740	15665	Capasitor 60 MF, 120V	1
750	15110	RC-circuit 230v	1
750	15111	RC-circuit 110v	1
760	25136	Draw bar kit M5	1
770	25135	Wiring kit	1
780	25148	Handle	1
790	14046	Nut, locking LM M5 A2	4
800	25147	Louver, right	1
810	10507	Foot, rubber BVO 22H10	4
820	40786	Screw for rubberfoot	4
830	15354	Magnetic switch HM-S-16	1
840	1184	Wrench for decoring device	1
850	10497	Bushing plastic 05-6-10-7.5	1
860	10498	Easher plastic 32-6	2
870	14465	Screw LSKS M6X20 A2 70	1
900	1098	Planetwheels and gearing kit	1
920	25103	Feeder unit compl.	1